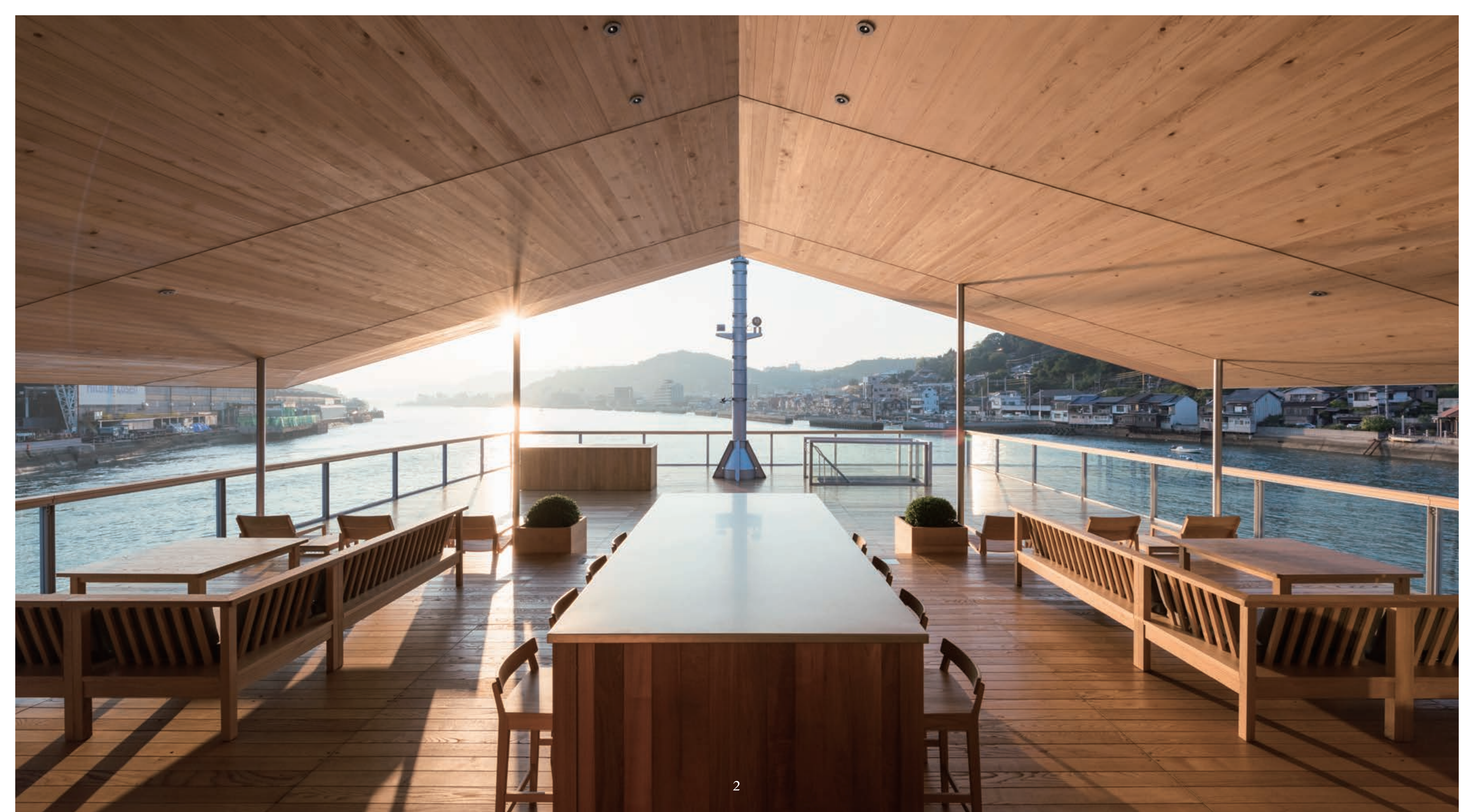


 guntû









## SETOUCHI ROAMING

A small inn floating in the Seto Inland Sea—guntô is a luxury journey through Japan unlike any other.

Guntô roams across Setouchi, as people call the archipelago of small islands in western Japan woven together by the calm waters of the Seto Inland Sea. Setouchi is a beautiful and mysterious world unto itself, with more than 700 islands floating in a seascape of 23,000 square kilometers and 7,000 kilometers of shoreline.

Since ancient times, these waters have bustled with boats connecting western Japan to Osaka and Tokyo to the east, as well as foreign trading vessels. Its shores have been dotted with the hideouts of legendary Japa-

nese pirates, and the footprints of Korean delegations and foreign missionaries.

Guntô was conceived as an “inn” where travelers can pass time upon the sea while enjoying the nature and culture of Setouchi.

Relax as this space resembling a Japanese *ryokan* blends into the gentle scenery of Setouchi.

## ACCOMMODATIONS

—

Guntû accommodates guests in 19 cabins with four suite styles. All 19 wood-paneled cabins are designed by architect Yasushi Horibe, known for his Japanese-style homes, and feature terraces placed close to the surface of the sea. As the floating hotel blends into the Setouchi seascape, the experience of being aboard is like staying at a friend's elegant guest house.

The refreshing wooden interiors form a comfortable cocoon from which to enjoy the rustic view of Setouchi. High-quality items such as soft Imabari towels and sheets have been included for your comfort.

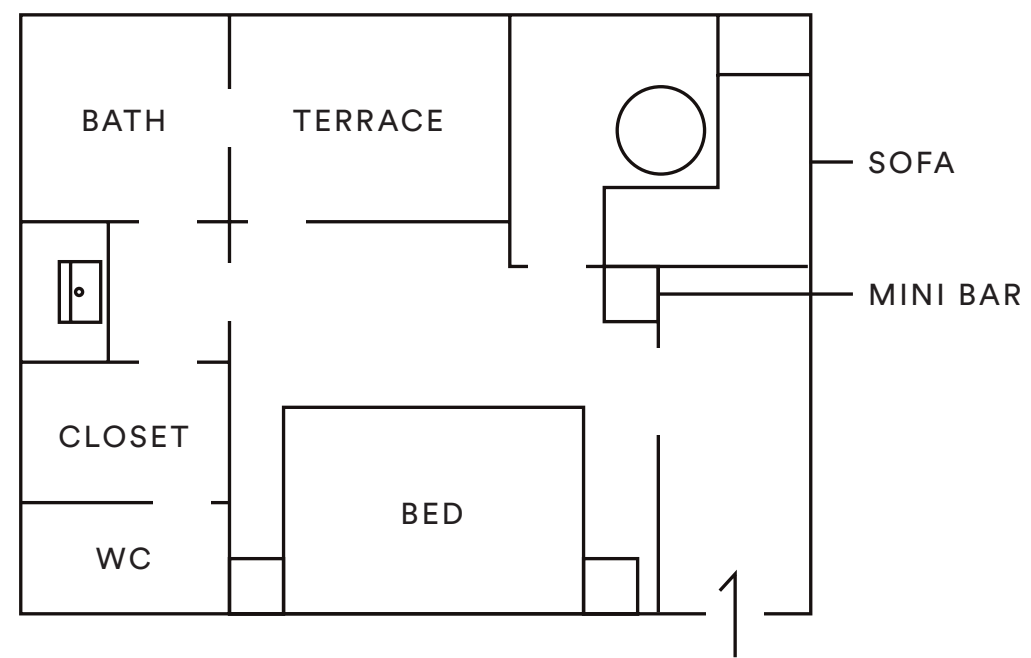
The image shows the interior of a Terrace Suite cabin. The room features a large window on the left side, providing a view of the sea and mountains. The ceiling is made of light-colored wood slats. In the foreground, there are two beds with white linens. A small table with a white cushion and a glass of water is positioned near the window. The overall atmosphere is bright and airy.

## TERRACE SUITE

(14 cabins)

—

This cabin's seaside sitting area lets you perch at the edge of the water. The glassed-in bathroom located along the terrace makes for an enjoyable bathing experience regardless of the weather, while giving you a sense of being one with the sea.



TERRACE SUITE (Approximately 50 m<sup>2</sup> / 538 ft<sup>2</sup>)

MAIN FEATURES

- Simmons Beds (Hollywood Twin)
- Sofa / Writing Desk
- Terrace
- Bath
- Minibar / Wine Cellar
- iPad Pro
- Bang & Olufsen Bluetooth Speaker
- Complimentary Wi-Fi



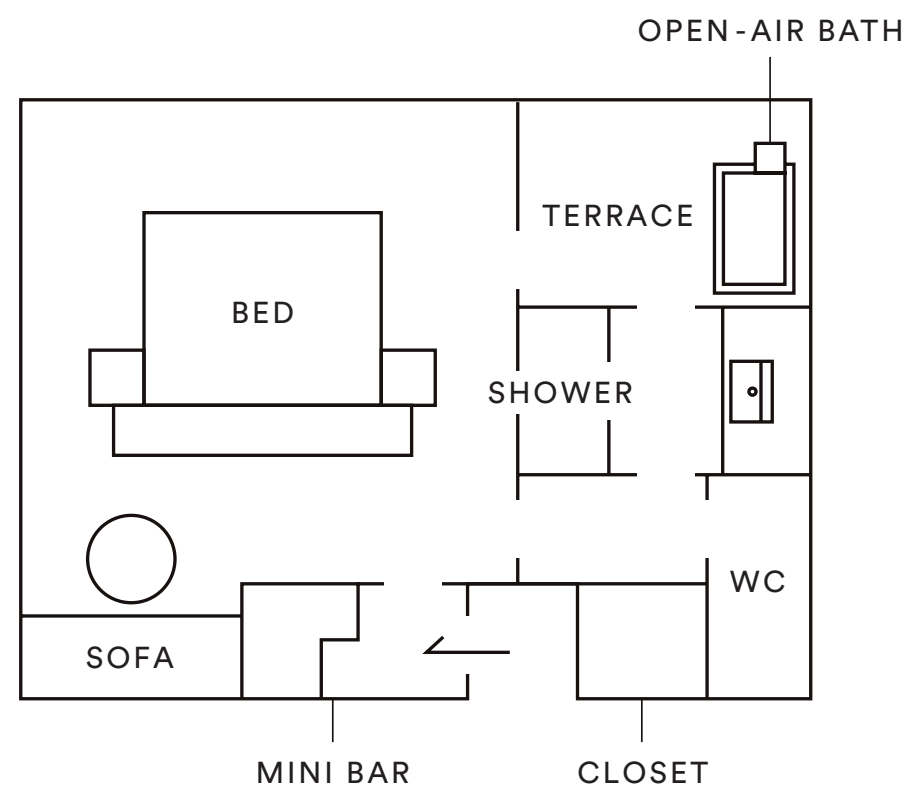
## TERRACE SUITE

With Open-Air Bath (2 cabins)

—

The bed is closest to the window in this cabin, giving you an unobstructed, intimate view toward the horizon. An open-air bath allows you to relax outdoors while still in the comfort of your own suite.





TERRACE SUITE WITH OPEN-AIR BATH (Approximately 50 m<sup>2</sup> / 538 ft<sup>2</sup>)

MAIN FEATURES

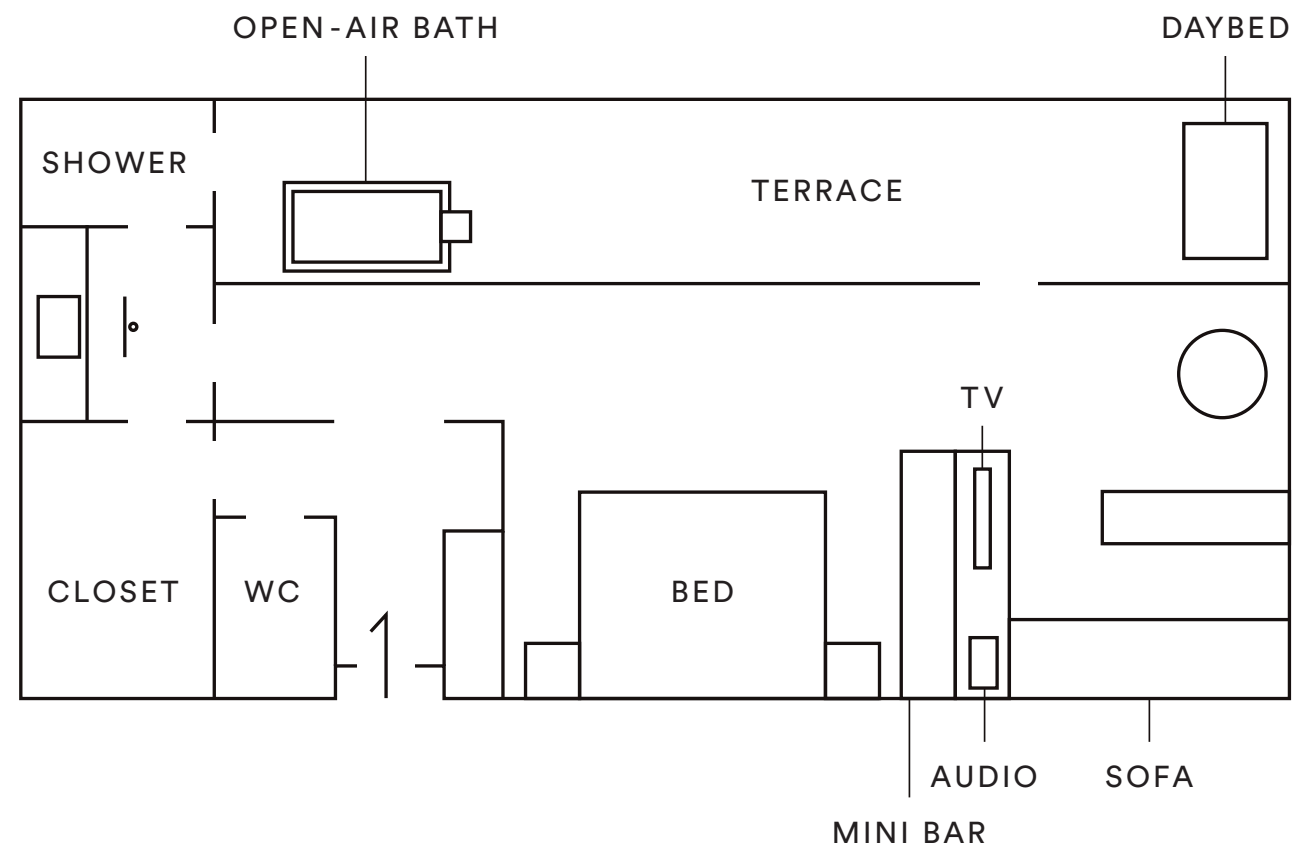
- Simmons Beds (Hollywood Twin)
- Sofa / Writing Desk
- Terrace
- Open-Air Cypress Bath
- Minibar / Wine Cellar
- iPad Pro
- Bang & Olufsen Bluetooth Speaker
- Complimentary Wi-Fi

## GRAND SUITE

(2 cabins)

—

Grand Suite has the largest terrace of the four cabin types. As you soak in the open-air bath on the spacious terrace, you can have the beautiful panorama view of Setouchi all to yourself.



GRAND SUITE (Approximately 80 m<sup>2</sup> / 862 ft<sup>2</sup>)

MAIN FEATURES

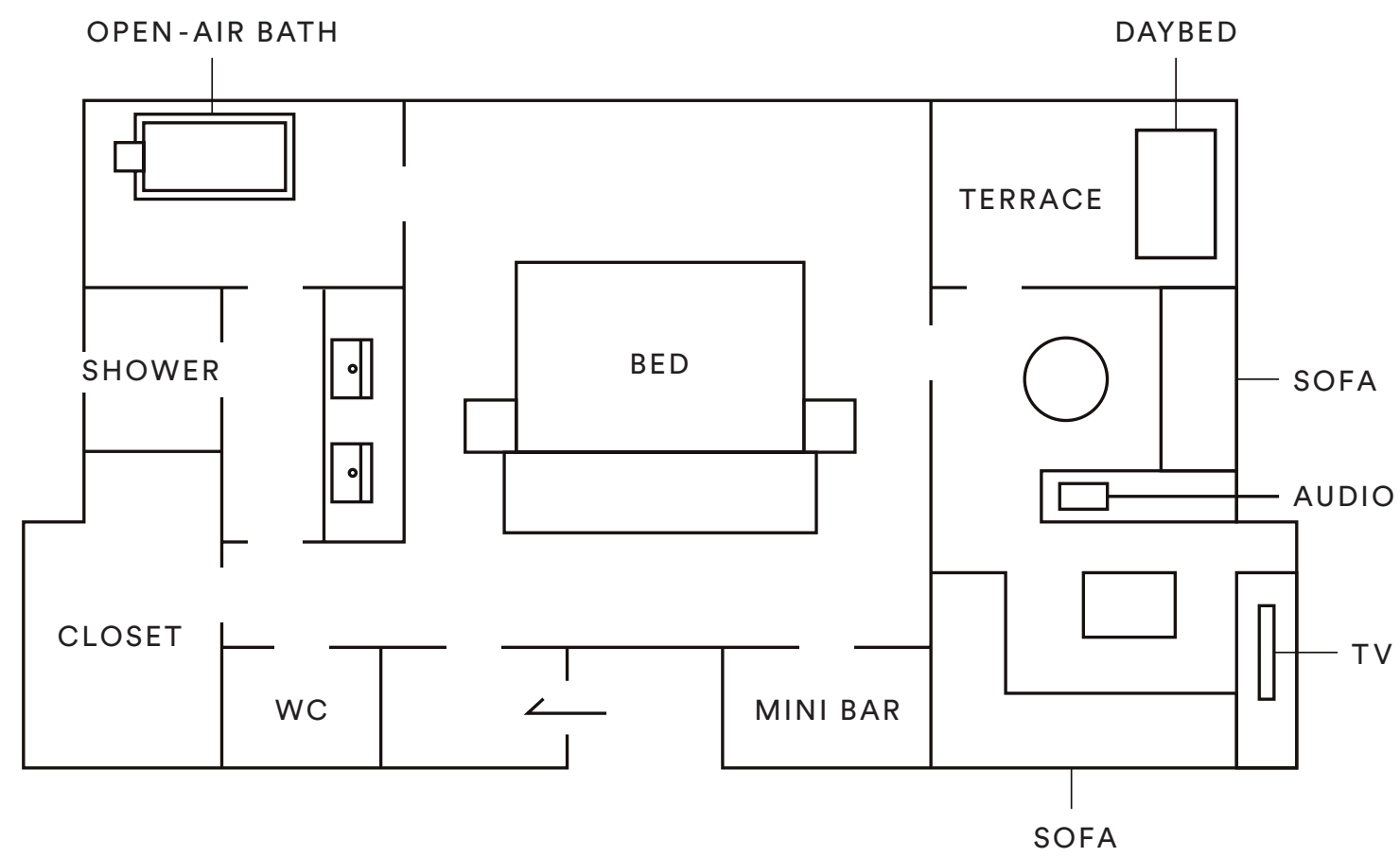
- Simmons Beds (Hollywood Twin)
- Sofa / Writing Desk
- Terrace with Daybed
- Open-Air Cypress Bath
- Minibar / Wine Cellar
- iPad Pro
- Bang & Olufsen Bluetooth Speaker
- Audio Tekne Sound System
- Television
- Complimentary Wi-Fi

## THE guntû SUITE

(1 cabin)

—

The bow of the ship is exclusively reserved for The guntû Suite. This is the only cabin with forward-facing windows. While gazing ahead and to the sides at the view sliding past, you can enjoy guntû at its best in this special space.



THE GUNTÛ SUITE (Approximately 90 m<sup>2</sup> / 969 ft<sup>2</sup>)

#### MAIN FEATURES

- Simmons Beds (Hollywood Twin)
- Sofa / Writing Desk
- Terrace with Daybed
- Open-Air Cypress Bath
- Minibar / Wine Cellar
- iPad Pro
- Bang & Olufsen Bluetooth Speaker
- Audio Tekne Sound System
- Television
- Complimentary Wi-Fi



## DINING

---

Enjoy what you want, as much as you want. This is the essential concept of guntô hospitality.

In the dining area, we make use of ingredients from different areas around eastern and western Setouchi, depending on the weather and mood of the day. You will discover exquisite ingredients that our chefs prepare to meet your preferences.

The best ingredients for every type of dish. Simplicity and refinement are the cornerstones of our cuisine.

Take pleasure in the luxury of exceptional dining as you float across the sea.



## JAPANESE CUISINE

Dining Room



Kenzo Sato from Shigeyoshi, a venerable restaurant in Tokyo, supervises Japanese cuisine. Select your favorite ingredients from a selection of fresh fish and meat from the Setouchi region, and it will be cooked as you wish—anything from sashimi to broiled fish. The head chef will present his special of the day for your selection.





# SUSHI

Sushi Bar



Supervised by Nobuo Sakamoto of the sushi restaurant Nobu at Awajishima, the cozy six-seat sushi bar features a view of the ever-changing scenery outside. Delight in the delicate yet profound flavor of the local fish served with citrus, and savor subtle differences resulting from the location and season of the catch.







# JAPANESE STYLE WESTERN CUISINE

Dining Room



Guntû's Western cuisine is based on the nostalgic Japanese style of Western dishes known as yoshoku, prepared simply but with great care. Enjoy guntû's original dishes such as seafood croquettes and stew made from Setouchi ingredients. You may order small portions from this menu along with Japanese cuisine.





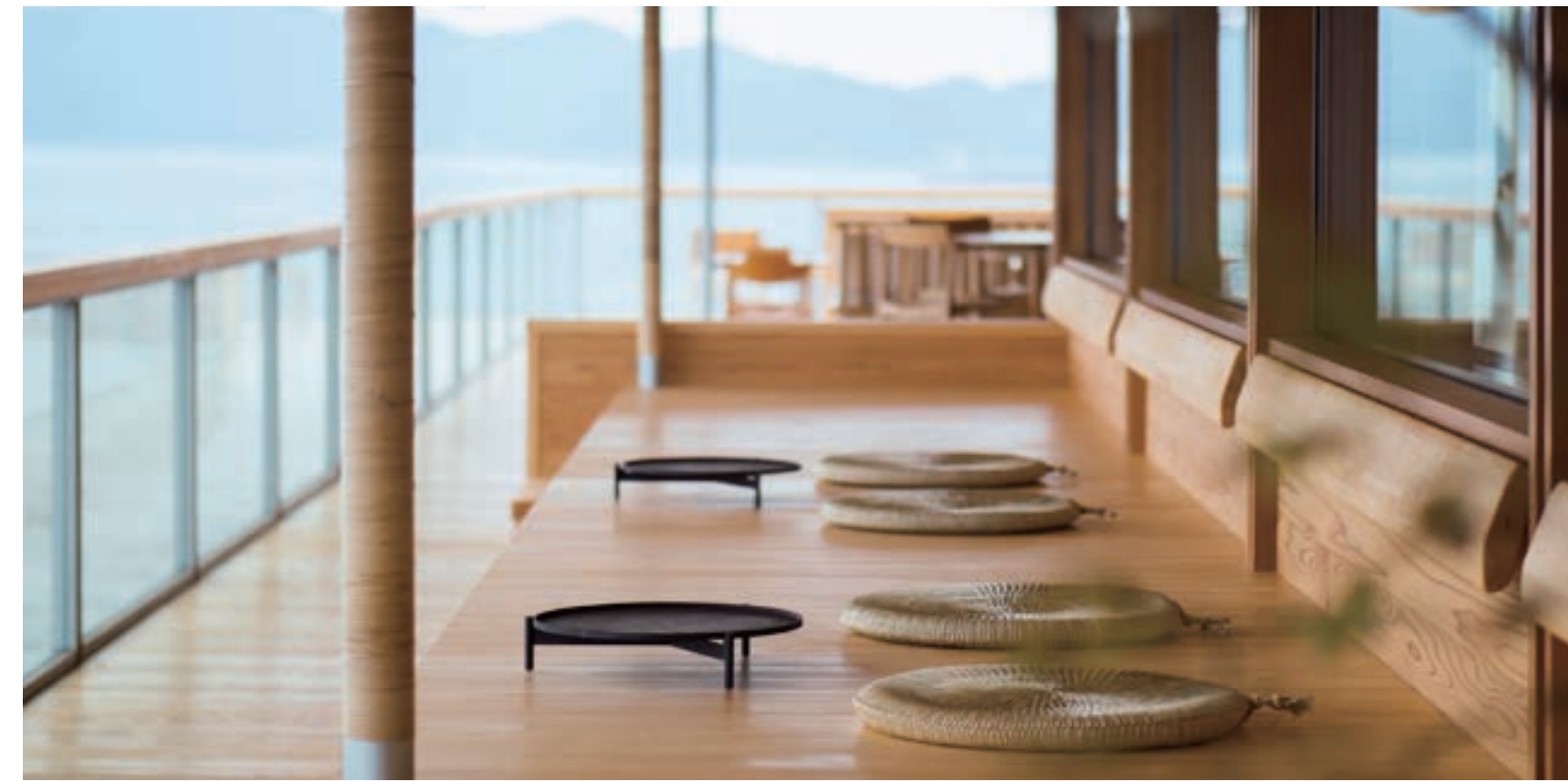
## COFFEE & DRINKS

Café & Bar / Lounge



At the Café & Bar, you can enjoy original cocktails inspired by the essence of various islands as you soak in the scenery ahead on the open deck under guntû's unique gabled roof. At the lounge located in the stern, you can spend quiet time reading books from the library while enjoying a drink of your choice.





## JAPANESE STYLE VERANDA

The Engawa



The Engawa is a traditional Japanese style of veranda found in temples and houses. From olden times, Japanese people have cherished moments on the Engawa, lost in thought while sipping tea and gazing at rock gardens. Dressed in yukata with your favorite snacks and sake by your side, you can savor the slow flow of time in Japan.





# EXPERIENCE OF TEA CEREMONY AT THE LOUNGE

Lounge



The tea master serves you matcha green tea and Japanese sweets at a table with chairs. The sweets are supervised by Joichiro Kita from Nara's Kashiya, and use ingredients carefully grown from scratch. These sweets are prepared in front of you in the traditional manner, an unusual style of presentation in this day and age.



A photograph of a spa area with a wooden interior, a large window overlooking the ocean, and a hot tub in the foreground. The room has a warm, natural wood finish on the walls and ceiling. Two black lantern-style light fixtures are mounted on the walls. A large window provides a view of the sea and distant mountains. In the foreground, a rectangular hot tub is partially filled with water, reflecting the light from the window. A small wooden box is placed on the ledge of the hot tub.

## RELAXATION & FITNESS

—

The spa area includes treatment rooms, communal baths, saunas and a gym. For relaxation, original treatment and massage menus have been prepared to meet the mood and physical condition of each and every individual. Choukoku-Lymph® Treatments are a slow and deep method of care performed while warming your body on a bedrock mat. From a facial to the entire body, total care is available.

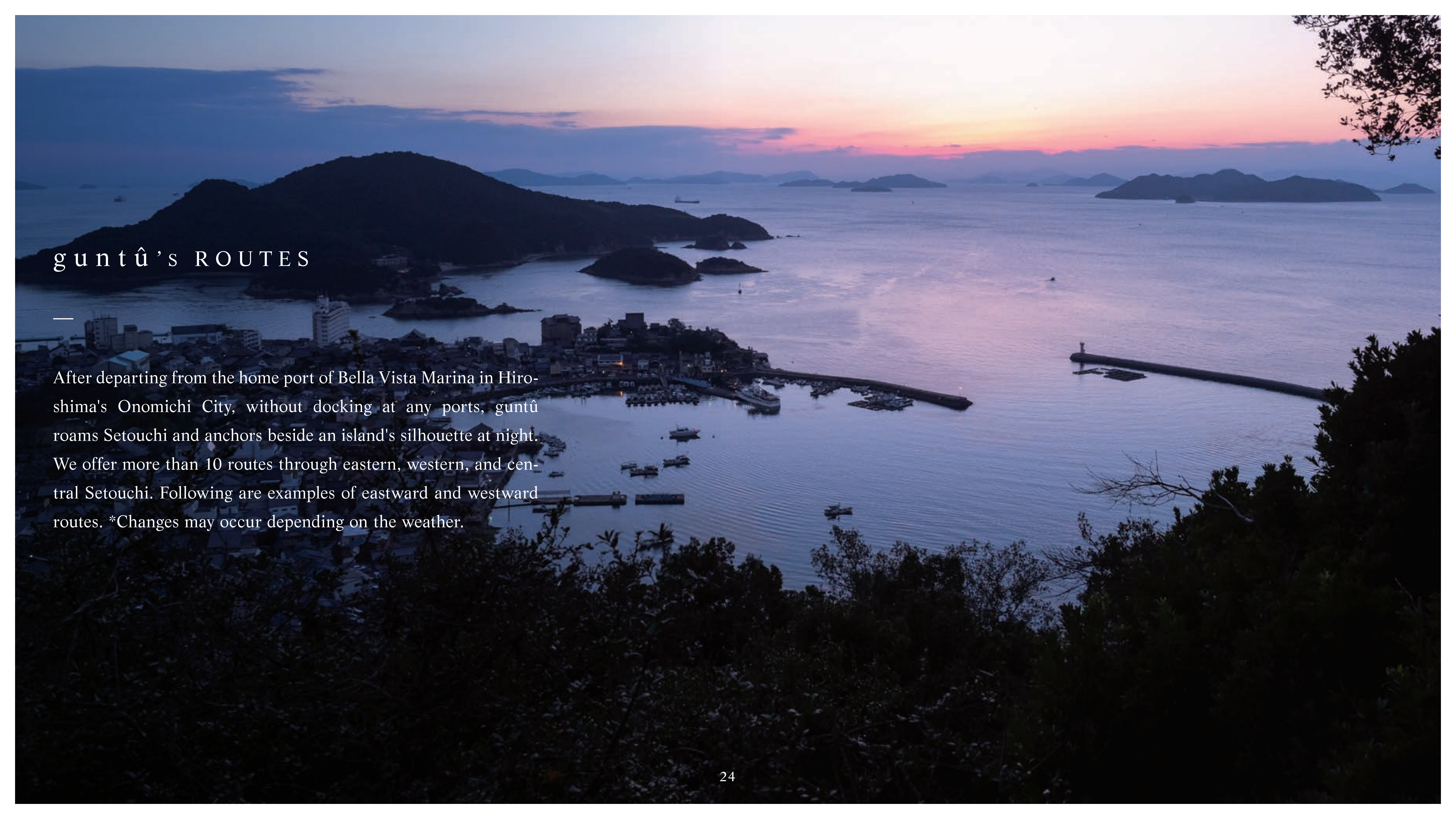
Japanese-style Nentai massage eases your body's distortions and tension, and nurtures a healthy state with an approach tailored to your needs. These appointment-only beauty and bodywork sessions are normally available in the treatment rooms. In addition, bodywork procedures are also available in The guntû Suite, Grand Suites and Terrace Suites.



## EXPLORATIONS

---

Going ashore on islands along the ship's route using our dedicated speed boats, you have a chance to visit places not normally available for sightseeing. Enjoy morning strolls along quiet lanes among the remains of old houses, experience fishing from small fishing boats, or observe seasonal events such as fireworks and festivals. Gain firsthand knowledge of local ways of life and culture.



## guntû's ROUTES

---

After departing from the home port of Bella Vista Marina in Hiroshima's Onomichi City, without docking at any ports, guntû roams Setouchi and anchors beside an island's silhouette at night. We offer more than 10 routes through eastern, western, and central Setouchi. Following are examples of eastward and westward routes. \*Changes may occur depending on the weather.



## EASTWARD ROUTE

A Typical Route (4 Days 3 Nights)

A route to discover the attractions of the old and new Setouchi.

Pass underneath the 13 km-long Great Seto Bridge, and gaze at the fantastic landscape of an industrial complex lighting up the night's darkness.

Explorations include visiting art on islands such as Naoshima, as well as touring an old-time soy sauce storehouse or viewing a ritual fire.



## WESTWARD ROUTE

A Typical Route (3 Days 2 Nights)

A route to experience the romance of history. Visit one of the Japan's World Cultural Heritage sites, Itsukushima Shrine, while exploring the old streets of Miyajima. Guntô passes through narrow island channels that once served as the bases of the Murakami *suigun* pirates, who were legendary for piloting ships through the turbulent waters.

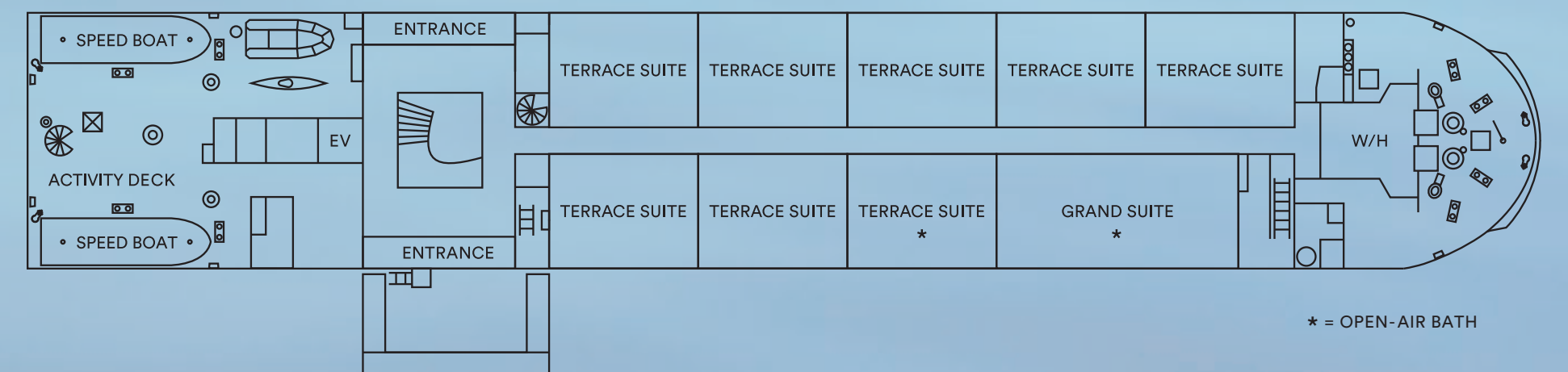
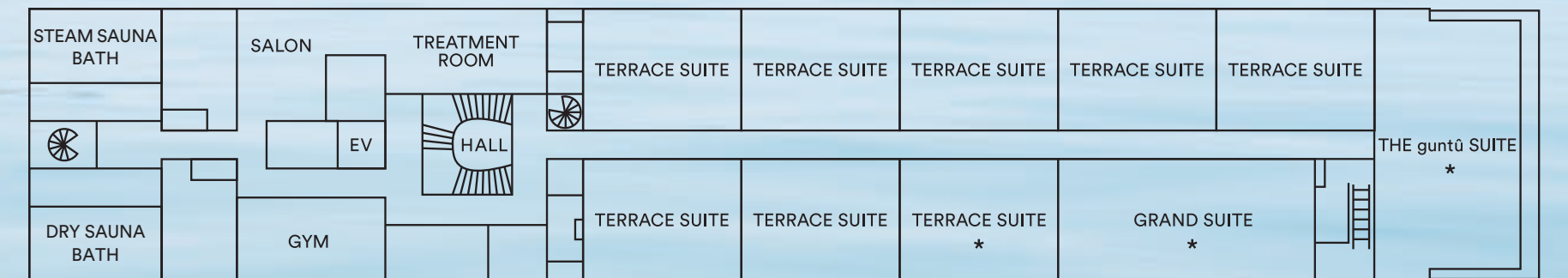
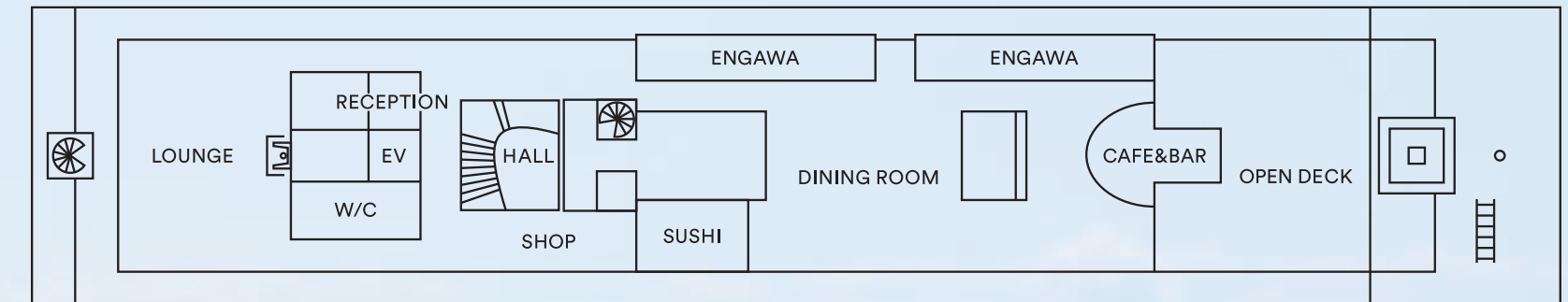
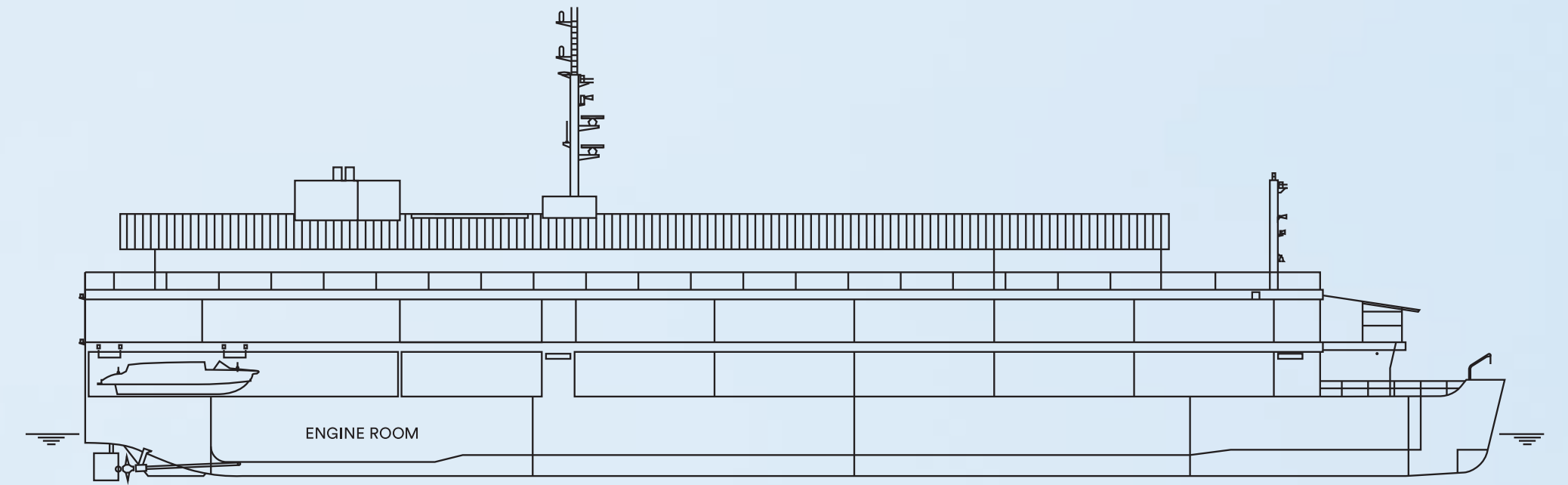


SHIP NAME: g u n t û

—  
The ship's name "guntû" is borrowed from the nickname of a blue crab native to Setouchi. In that spirit, the ship features the rich delicacies of Setouchi and passes down its traditions and culture. It is our hope that it will be loved forever by passengers as well as locals. The circumflex above the 'u' (û) evokes the ship's hull and the symbolic form of the gabled roof.

# BASIC SPECIFICATIONS

- Total Weight : 3,013 tons
- Total Length : 81.2 meters
- Total Width : 13.75 meters
- Main Engine : 2 water cooled three-phase induction motors
- Cruising Speed : 10 knots
- Passenger Capacity : 38 (Guest Number)



## LOCATION

Bella Vista Marina  
1364-6 Urasaki-cho, Onomichi, Hiroshima

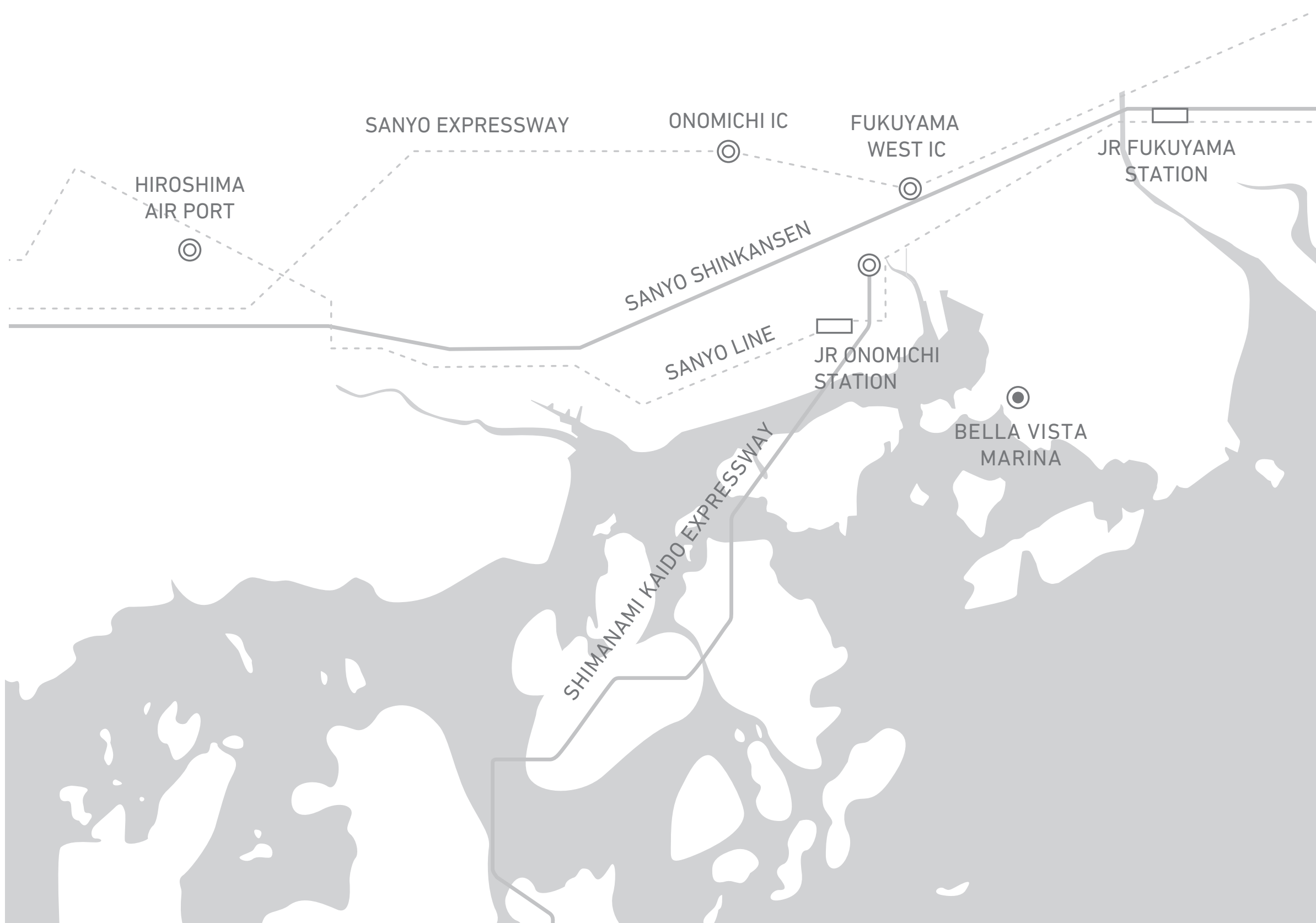
## INQUIRY

Tel: +81-848-70-0010  
e-mail: info-en@guntu.jp

## ACCESS

By Shinkansen Bullet Train  
TOKYO – FUKUYAMA / 3.5 hours  
SHIN OSAKA – FUKUYAMA / 1 hour  
From Fukuyama Station by car approx. 40 minutes

By Air  
HANEDA AIRPORT – HIROSHIMA / 1.5 hours  
From Hiroshima Airport by car approx. 1 hour





guntu.jp

